

MPC-374



OVERVIEW

MPC-374 controller is created for data logging and analyzing in a real time. Using GPRS/GSM and/or Ethernet, controller sends saved data and reports to remote users.

Controller supports most of protocols and interfaces (RS232, RS485, MBUS, Data/Req, Current loop, Discrete inputs), so it can be used with different brands and models of counters. Our special "TRANSPARENT" data transfer protocol enables controllers to use with practically any device.

Device supports wide range of protocols (and can be extended by our programmers, if you need some special). For data exchange over GPRS/GSM, Ethernet and/or any Serial interfaces, controller uses Modbus TCP/IP, Modbus RTU, IEC60870-5-104:2000

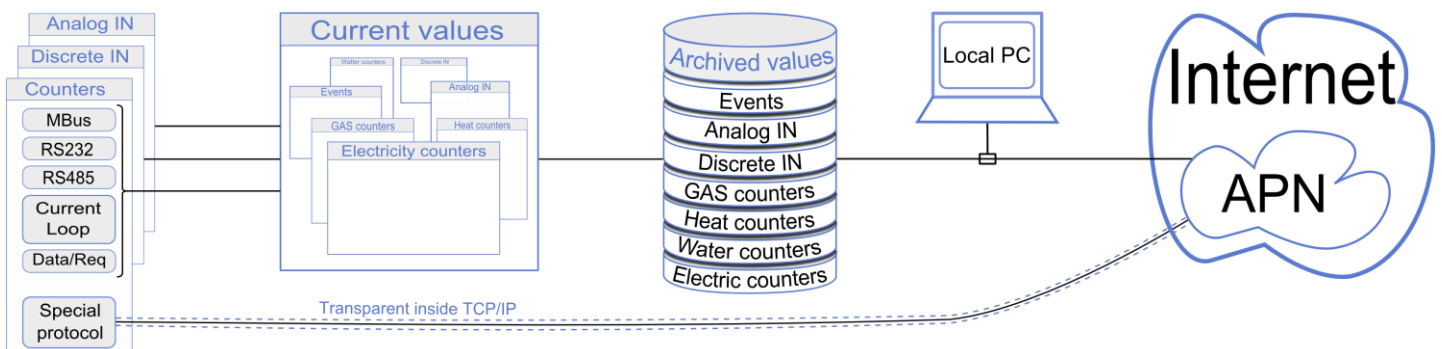
Our clients – GAS, Heat, Watering suppliers, Industry companies in EU, Ukraine, Central Asia.

DEFAULT FEATURES

- ✓ Reading data from energy carrier meters;
- ✓ "TRANSPARENT" remote data reading from counters (special manufacturers protocols);
- ✓ Discrete input/output ports;
- ✓ Independent data log (up to 8MB) with real time stamp;
- ✓ Remote configuration and upgrading possibilities over GPRS/GSM and Ethernet;
- ✓ Widest range of interfaces: GSM/GPRS, Ethernet, RS232, RS485, Current Loop, USB, Data/Req, Mbus, IEC60870-5-104:2000;
- ✓ Galvanically isolated interfaces and power supply;
- ✓ Power supply for external powering of counters.

BENEFIT TO THE CLIENT

- ✓ **Economy**, because controller does a lot of mechanic work, so your professionals can do more important work;
- ✓ Increase **efficiency**, because the data are sent to a central computer continuously. If connection is lost, data will be safe kept in controllers memory, until connection will be reestablished;
- ✓ Increases **security**, because the relevant information is rapidly shorten response time;
- ✓ **Versatile**, because this controller can retrieve data from different manufacturers and even different types of meters;
- ✓ **Simplicity**, because of intuitive control and optimally assembled LED's it is easy to monitor and maintain equipment;
- ✓ **A good partner**, because we not only help you customize and will make equipment, but also flexibly adapt controller, if your demands will change.



CUSTOMIZING DEVICE

The exceptional feature of this device - a flexible hardware and software configuration, it depends on customer needs. You can choose the desired interface and functionality.

	RS232	RS485	Data/Req	MBUS	Current loop	USB 2.0	Ethernet	GSM (GPRS)	Ext. power	Jumper switchable
I	○	○			○					
II	○*	○*	○*						●	
III	○*	○*		○*						○*
IV	○*	○*	○*	○*						○*
V	○	○								
VI	○	○								
VII	○									
VIII	○							○		
IX							○			
X						○				
Discrete IN	8			Discrete OUT		8		Analog IN		8

○-optional one interface per socket; *-galvanically isolated; ●-installed permanently

Overall specification

CPU: ARM7
Flash: archive storage of 1-8 MB, battery backup
GSM/GPRS: 3 band 900/1800/1900 MHz

Interfaces

RS232: up to 15m (50ft), speed up to 19,2 Kbits/s
RS485: up to 1.2 km (0.75 mi), max 32 transivers, up to 19.2 Kbits/s
Data/Req: (KAMSTRUP) data transfer interface
Mbus: up to 250 devices
Current loop: <30V, 14-20mA, up to 6 km (3.71mi), speed up to 19,2 Kbit/s
USB: type B, ver. 2.0,
Ethernet: twisted pair Ethernet 10/100 Mb, up to 100m (328ft)

Discrete In: 8 sink contacts
Discrete Out: 8 open contacts
Analog Inputs: 0/4÷20mA, 0÷5mA, error 0,15%

LED indication

Power
Discrete Input signal status for each port
Serial ports read/write for each port
Ethernet status
GSM/GPRS modem status

Protocols

Modbus RTU, Modbus TCP/IP, IP, ICMP, UDP, TCP, DHCP, PPP, ARP, SNMP, IEC60870-5-104:2000 (IEC 104)

Manufacturer:

Company "VALSENA"
Savanorių 271 - 412
Kaunas LT 50131, Lithuania
Phone: +370 37 310603
Fax: +370 37 310648
E-mail: valsena@valsena.lt

General

Power supply: 9 – 36 VDC / 10VA
Over-voltage protection: >1000V
Power consumption: <10VA
Power for ext. devices: 3,7/5/6/8/10 VDC (20mA)

Physical characteristics

Dimensions: 277x128x50 mm
Weight: 540 g
Case fixing type: DIN32
Protection type: IP20

Climate conditions

Operating temperature: -25 .. +60°C (-13..140°F)
Storage temperature: -40 .. +60°C (-40..140°F)
Humidity range: 5 – 95%, non-condensing

Regulatory approvals

LST EN 55022:2000+A1+AC:2002+A2:2003
LST EN 55024:2000+A1:2003+A2:2003
LST EN 61000-4-5:2002+A1:2003
LST EN 61000-4-6:2002+A1:2003
LST EN 61000-4-4:2005
LST EN 61000-4-3+A1:2004
LST EN 61000-4-2+A1+A2:2002

Other features

Real time clock
Mbus auto setup
Jumper switchable sockets, can be installed more than one type of interfaces

Warranty

Warranty period: 2 years

Distributor: